



State Council of
Higher Education for Virginia

House Appropriations Committee

**2012-13 Tuition And Fees
At Virginia Public Institutions**

Peter Blake
SCHEV Director
June 18, 2012

Higher Education and the 2012 Legislative Session

The 2012 General Assembly provided over \$258 million in additional general fund support to higher education for the 2012-14 biennium, including the following highlights for FY2013:

- \$66.5 million for base operations, enrollment increase, STEM degrees, incentives to support TJ21 legislation, interest earnings, and other institutional initiatives.
- \$8.4 million for need-based financial aid to Virginia undergraduate students. This represents a 5.3% increase over the FY12 level.
- \$8.2 million for higher education research support, including research funding in Commerce and Trade.
- \$27.6 million for affiliated agencies (VIMS, EVMS, etc.) and SCHEV (agency operating expenses, TAG, etc.)
- A 3% bonus on December 1, 2012..

Higher Education and the 2012 Legislative Session

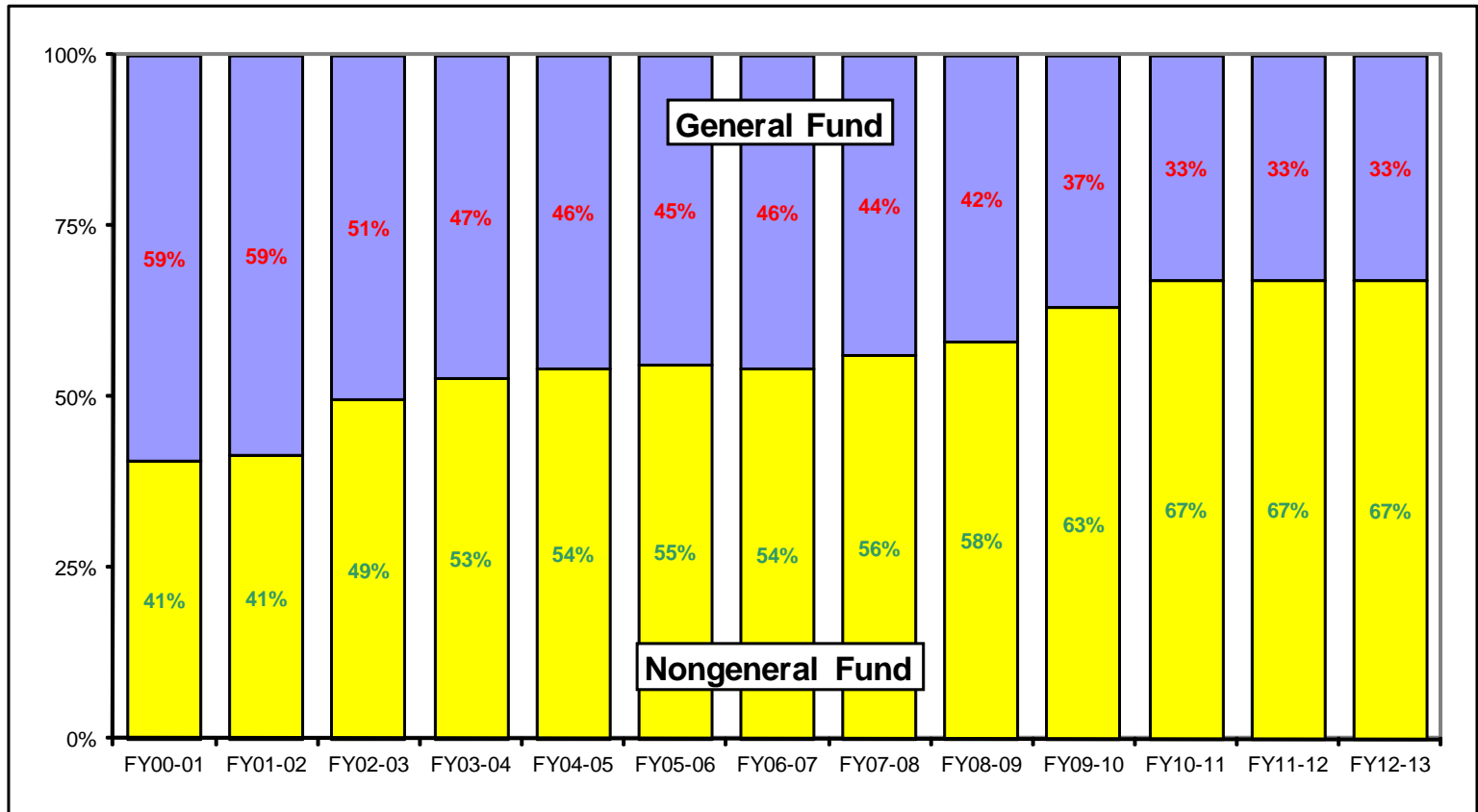
Change in General Fund Appropriations to E&G Programs in the 2012-14 Biennium

Inst.	2011-12	FY13 Additions	% Increase	FY14 Additions	% Increase
	General Fund ¹	over FY12	over FY12	over FY12	over FY13
CNU	\$22,294,146	\$1,448,183	6.5%	\$1,748,068	1.3%
CWM	\$35,455,479	\$1,097,190	3.1%	\$1,723,959	1.7%
GMU	\$107,701,785	\$4,992,484	4.6%	\$6,655,627	1.5%
JMU	\$62,612,561	\$4,459,719	7.1%	\$5,397,166	1.4%
LU	\$22,022,029	\$1,118,763	5.1%	\$1,384,974	1.2%
NSU	\$37,768,961	\$1,818,964	4.8%	\$2,053,837	0.6%
ODU	\$91,185,656	\$6,843,230	7.5%	\$7,824,612	1.0%
RU	\$39,655,799	\$2,496,436	6.3%	\$3,063,617	1.3%
UMW	\$18,009,108	\$1,121,555	6.2%	\$1,398,823	1.4%
UVA	\$110,344,515	\$3,470,242	3.1%	\$5,131,689	1.5%
UVAW	\$11,317,374	\$1,163,446	10.3%	\$1,279,836	0.9%
VCU	\$142,388,453	\$7,166,101	5.0%	\$9,871,149	1.8%
VMI	\$7,429,107	\$656,731	8.8%	\$760,105	1.3%
VSU	\$27,994,002	\$1,731,790	6.2%	\$1,963,084	0.8%
VT	\$131,384,530	\$3,887,079	3.0%	\$5,831,392	1.4%
RBC	\$4,951,071	\$291,594	5.9%	\$337,838	0.9%
VCCS	\$318,848,281	\$18,338,611	5.8%	\$22,720,895	1.3%
Int. Earnings ²		\$3,200,000		\$3,900,000	
Total	\$1,191,362,857	\$65,302,118	5.5%	\$83,046,671	1.4%

Notes:

- (1) Includes general fund appropriations for E&G and interest earnings/credit card rebates.
- (2) Not allocated to institutions.

Systemwide Fund Split of Educational and General Program Appropriations

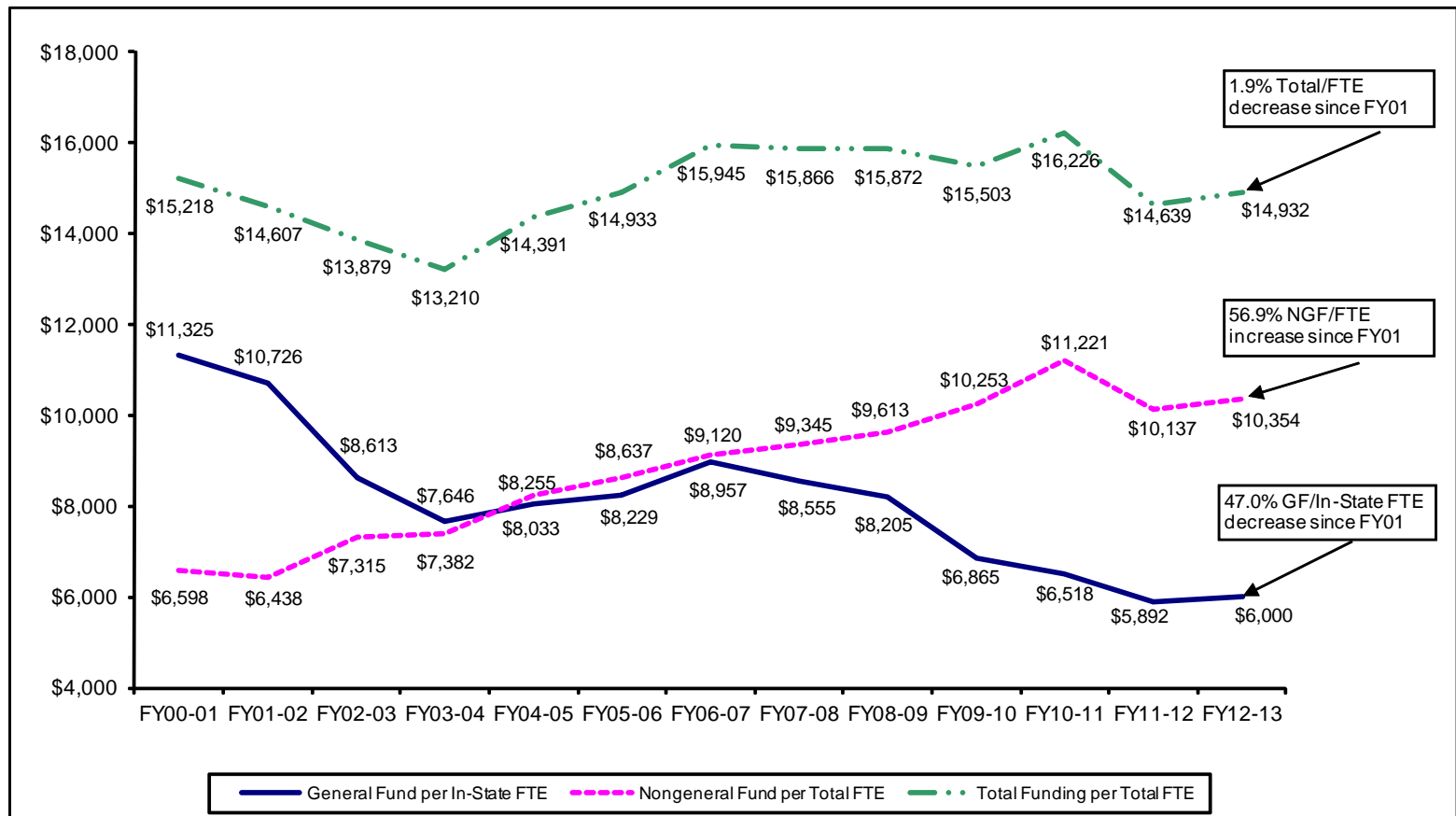


Notes:

- (1) FY10 and FY11 nongeneral fund appropriations include funding from the federal American Recovery and Reinvestment Act of 2009.
- (2) FY13 appropriations by fund are estimates.

Average Funding per FTE Student at System Level

In 2012-13 Constant Dollars



1.9% Total/FTE decrease since FY01

56.9% NGF/FTE increase since FY01

47.0% GF/In-State FTE decrease since FY01

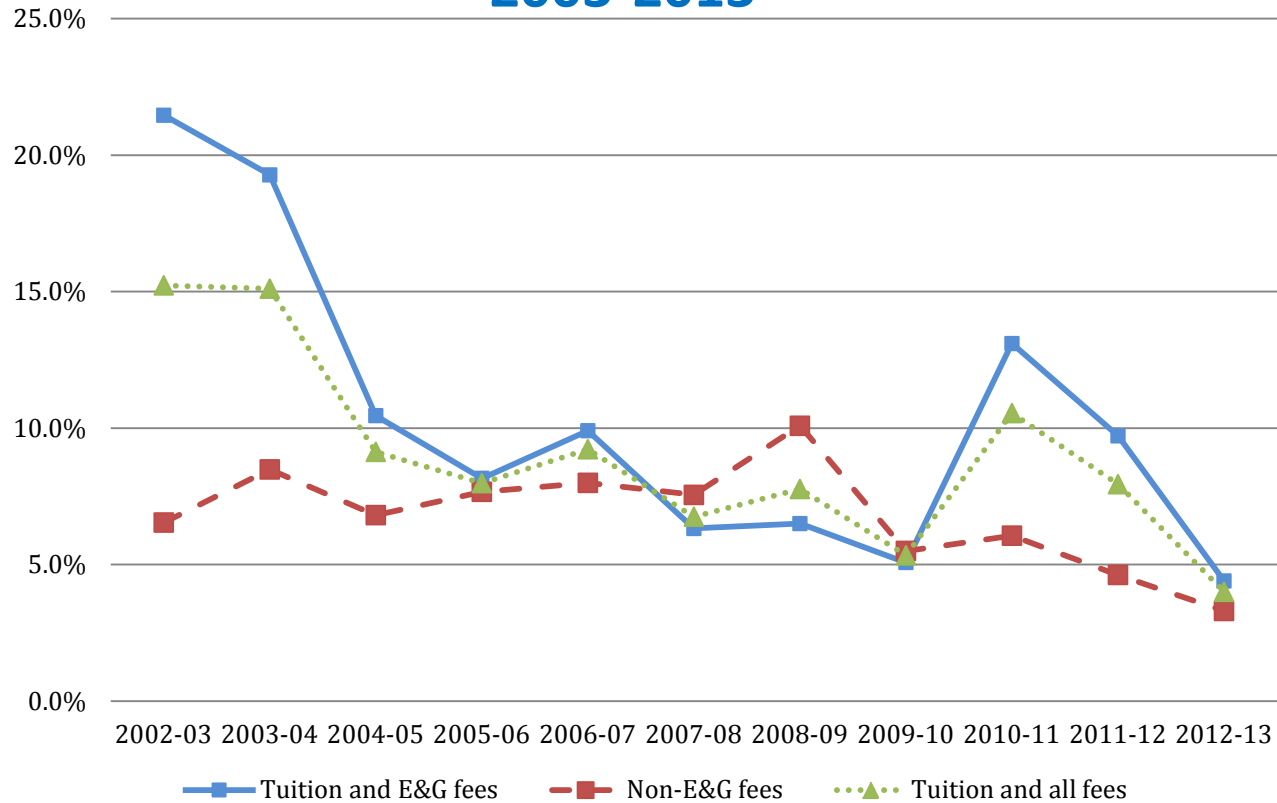
Notes:

- (1) Appropriations, both general fund and nongeneral fund, are taken from amended Appropriation Acts.
- (2) General fund Includes interest earnings and credit card rebates related to Restructuring that are held in a central account.
- (3) FY10 and FY11 nongeneral Fund per Total FTE includes funding from the American Recovery and Reinvestment Act of 2009.
- (4) Total Funding per Total FTE is not the sum of General Fund per In-State FTE and Nongeneral Fund per Total FTE.
- (5) FY12 & FY13 are based on projected enrollments. All other years are based on actual enrollments.
- (6) FY13 appropriations by fund are estimates as the 2012-14 Appropriations Act has not been released.

Uses of Additional Tuition Revenue

- Provide funding for increases in fringe benefits.
- Provide funding for the operation and maintenance of new space coming online.
- Provide funding for increased utility costs.
- Increase need-based student financial aid.
- Provide resources to add instructional faculty and staff in response to increased enrollment.
- Provide funding for six-year plan initiatives.

Average Annual Increase of Tuition and Fees for In-State Undergraduate Students 2003-2013



	2002-03	2003-04	2004-05	2005-06	2006-07	2007-08	2008-09	2009-10	2010-11	2011-12	2012-13
Tuition and E&G fees	21.5%	19.3%	10.5%	8.2%	9.9%	6.3%	6.5%	5.1%	13.1%	9.7%	4.4%
Non-E&G fees	6.5%	8.5%	6.8%	7.7%	8.0%	7.6%	10.1%	5.5%	6.1%	4.6%	3.3%
Tuition and all fees	15.2%	15.1%	9.1%	8.0%	9.2%	6.8%	7.8%	5.3%	10.6%	7.9%	4.0%

Preliminary data

2012-13 Undergraduate Tuition and Mandatory E&G Fees (Preliminary Data)

Institution	In-State Undergraduate			Out-of-State Undergraduate		
	Charge	Change over 2011-12		Charge	Change over 2011-12	
		Percent	Amount		Percent	Amount
GMU	\$7,010	3.8%	\$258	\$25,154	3.8%	\$924
ODU ¹	\$5,221	3.3%	\$169	\$20,101	3.7%	\$709
UVA	\$10,066	3.9%	\$382	\$36,078	4.0%	\$1,400
VCU	\$7,943	4.5%	\$343	\$21,970	4.5%	\$938
VT	\$9,250	3.9%	\$351	\$24,242	6.0%	\$1,372
CWM	\$8,778	4.9%	\$413	\$32,552	4.4%	\$1,357
CNU	\$6,244	5.0%	\$296	\$15,794	4.1%	\$624
UVAW	\$4,575	5.0%	\$218	\$18,943	5.4%	\$971
JMU	\$4,862	4.7%	\$220	\$18,850	5.1%	\$918
LU	\$6,180	4.0%	\$240	\$18,510	4.0%	\$720
UMW	\$6,468	5.0%	\$308	\$18,782	5.0%	\$894
NSU	\$3,540	2.0%	\$70	\$17,030	-0.5%	-\$83
RU	\$5,756	3.6%	\$200	\$17,326	3.7%	\$612
VMI	\$6,880	3.9%	\$258	\$26,856	4.9%	\$1,254
VSU	\$4,736	7.5%	\$330	\$13,890	4.4%	\$586
RBC	\$3,194	5.8%	\$176	\$13,060	3.2%	\$400
VCCS ^{2,3}	\$3,721	4.6%	\$165	\$9,484	1.9%	\$180
Avg 4-Yr	\$6,501	4.3%	\$271	\$21,739	4.2%	\$880
Avg All Inst	\$6,143	4.4%	\$259	\$20,507	4.1%	\$810

Notes:

(1) Rates are pending approval by the Board of Visitors.

(2) Northern Virginia Community College (NVCC) and J. Sargent Reynolds Community College (JSRCC) have tuition differentials in addition to the systemwide tuition. The additional charge at NVCC is \$514.50 for in-state and \$594 for out-of-state students. The additional charge at JSRCC is \$63 per year for both in-state and out-of-state students.

(3) Other mandatory fees vary by college, ranging from \$30.00 to \$805.50 per academic year, and are not included in this summary.

2012-13 Undergraduate Mandatory Non-E&G Fees and Room and Board (Preliminary Data)

Institutions	Mandatory Non-E&G Fees ¹			Average Room and Board ²		
	Charge	Change over 2011-12		Charge	Change over 2011-12	
		Percent	Amount		Percent	Amount
GMU	\$2,610	3.8%	\$96	\$8,680	3.3%	\$280
ODU ³	\$3,229	4.4%	\$137	\$8,547	4.0%	\$329
UVA	\$1,940	2.5%	\$48	\$9,419	4.2%	\$383
VCU	\$1,942	1.3%	\$25	\$8,748	1.2%	\$102
VT	\$1,673	3.9%	\$63	\$7,254	5.8%	\$398
CWM	\$4,792	0.5%	\$25	\$9,318	4.8%	\$426
CNU	\$4,328	4.6%	\$192	\$9,728	2.1%	\$200
UVAW	\$3,532	5.0%	\$168	\$9,440	6.2%	\$550
JMU	\$3,946	3.7%	\$140	\$8,630	3.5%	\$290
LU	\$4,710	2.6%	\$120	\$8,614	6.2%	\$500
UMW	\$2,778	5.0%	\$132	\$8,840	4.4%	\$372
NSU	\$3,220	0.0%	\$0	\$8,130	2.6%	\$203
RU	\$2,834	2.5%	\$70	\$7,881	3.8%	\$292
VMI	\$6,955	6.0%	\$393	\$7,733	3.9%	\$287
VSU	\$2,684	0.0%	\$0	\$9,680	9.0%	\$800
RBC ⁴	\$1,215	4.3%	\$50	\$9,670	4.3%	\$400
VCCS	\$14	0.0%	\$0	NA	N/A	N/A
Avg 4-Yr	\$3,412	3.3%	\$108	\$8,709	4.3%	\$360
Avg All Inst	\$3,082	3.3%	\$97	\$8,770	4.3%	\$364

Notes:

- (1) There is no difference in mandatory non-E&G fee charges by residency.
- (2) Charges listed here represent the weighted average double occupancy room charge and the maximum weekly meal plan offered, not necessarily the plan used by most students.
- (3) Rates are pending approval by the Board of Visitors.
- (4) \$9,670 is for room only. The college does not offer a board plan.

2012-13 Undergraduate Tuition and All Mandatory Fees (Preliminary Data)

Institution	In-State Undergraduate			Out-of-State Undergraduate		
	Charge	Change over 2011-12		Charge	Change over 2011-12	
		Percent	Amount		Percent	Amount
GMU	\$9,620	3.8%	\$354	\$27,764	3.8%	\$1,020
ODU ¹	\$8,450	3.8%	\$306	\$23,330	3.8%	\$846
UVA	\$12,006	3.7%	\$430	\$38,018	4.0%	\$1,448
VCU	\$9,885	3.9%	\$368	\$23,912	4.2%	\$963
VT	\$10,923	3.9%	\$414	\$25,915	5.9%	\$1,435
CWM	\$13,570	3.3%	\$438	\$37,344	3.8%	\$1,382
CNU	\$10,572	4.8%	\$488	\$20,122	4.2%	\$816
UVAW	\$8,107	5.0%	\$386	\$22,475	5.3%	\$607
JMU	\$8,808	4.3%	\$360	\$22,796	4.9%	\$1,058
LU	\$10,890	3.4%	\$360	\$23,220	3.8%	\$840
UMW	\$9,246	5.0%	\$440	\$21,560	5.0%	\$1,026
NSU	\$6,760	1.0%	\$70	\$20,250	-0.4%	-\$83
RU	\$8,590	3.2%	\$270	\$20,160	3.5%	\$682
VMI	\$13,835	4.9%	\$651	\$33,811	5.1%	\$1,647
VSU	\$7,420	4.7%	\$330	\$16,574	3.7%	\$586
RBC	\$4,409	5.4%	\$226	\$14,275	3.3%	\$450
VCCS ^{2,3}	\$3,735	4.6%	\$165	\$9,498	1.9%	\$180
Avg 4-Yr	\$9,912	4.0%	\$378	\$25,150	4.1%	\$987
Avg All Inst	\$9,225	4.0%	\$356	\$23,590	4.0%	\$908

Notes:

(1) Rates are pending approval by the Board of Visitors.

(2) Northern Virginia Community College (NVCC) and J. Sargent Reynolds Community College (JSRCC) have tuition differentials in addition to the systemwide tuition. The additional charge at NVCC is \$514.50 for in-state and \$594 for out-of-state students. The additional charge at JSRCC is \$63 per year for both in-state and out-of-state students.

(3) Other mandatory fees vary by college, ranging from \$30.00 to \$805.50 per academic year, and are not included in this summary.

2012-13 Undergraduate Total Cost

(Preliminary Data)

Institution	In-State Undergraduate			Out-of-State Undergraduate		
	Charge	Change over 2011-12		Charge	Change over 2011-12	
		Percent	Amount		Percent	Amount
GMU	\$18,300	3.6%	\$634	\$36,444	3.7%	\$1,300
ODU ¹	\$16,997	3.9%	\$635	\$31,877	3.8%	\$1,175
UVA	\$21,425	3.9%	\$813	\$47,437	4.0%	\$1,831
VCU	\$18,633	2.6%	\$470	\$32,660	3.4%	\$1,065
VT	\$18,177	4.7%	\$812	\$33,169	5.8%	\$1,833
CWM	\$22,888	3.9%	\$864	\$46,662	4.0%	\$1,808
CNU	\$20,300	3.5%	\$688	\$29,850	3.5%	\$1,016
UVAW	\$17,547	5.6%	\$936	\$31,915	5.6%	\$1,689
JMU	\$17,438	3.9%	\$650	\$31,426	4.5%	\$1,348
LU	\$19,504	4.6%	\$860	\$31,834	4.4%	\$1,340
UMW	\$18,086	4.7%	\$812	\$30,400	4.8%	\$1,398
NSU	\$14,890	1.9%	\$273	\$28,380	0.4%	\$120
RU	\$16,471	3.5%	\$562	\$28,041	3.6%	\$974
VMI	\$21,568	4.5%	\$938	\$41,544	4.9%	\$1,934
VSU	\$17,100	7.1%	\$1,130	\$26,254	5.6%	\$1,386
RBC	\$14,079	4.7%	\$626	\$23,945	3.7%	\$850
VCCS ^{2,3}	\$3,735	4.6%	\$165	\$9,498	1.9%	\$180
Avg 4-Yr	\$18,622	4.1%	\$739	\$33,860	4.1%	\$1,348
Avg All Inst	\$17,479	4.2%	\$698	\$31,843	4.1%	\$1,250

Notes:

(1) Rates are pending approval by the Board of Visitors.

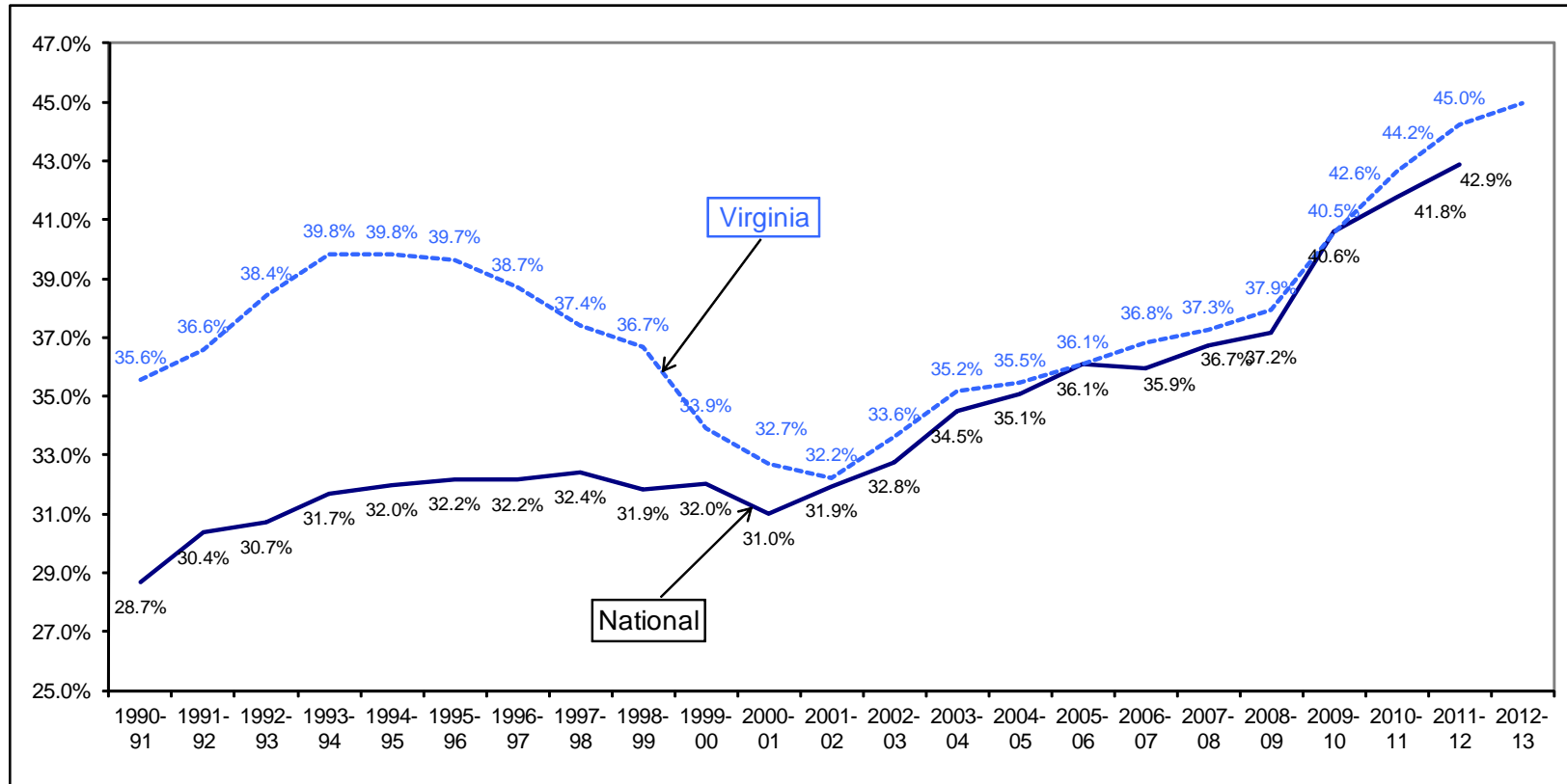
(2) Northern Virginia Community College (NVCC) and J. Sargent Reynolds Community College (JSRCC) have tuition differentials in addition to the systemwide tuition. The additional charge at NVCC is \$514.50 for in-state and \$594 for out-of-state students. The additional charge at JSRCC is \$63 per year for both in-state and out-of-state students.

(3) Other mandatory fees vary by college, ranging from \$30.00 to \$805.50 per academic year, and are not included in this summary.



Virginia National Comparison

Average Public 4-Year Total Undergraduate Charges As a Percent of Per Capita Disposable Income (Preliminary Data)



Note: Cost includes tuition and mandatory fees, and room and board.

Source: College Board, US Bureau of Economic Analysis, and SCHEV.

Looking Forward

- The growing importance of higher education as a requirement for sustainable employment and quality of life imposes an ever-greater responsibility on the Commonwealth to ensure that Virginia's public higher education system remains not only viable but vibrant.
- Dramatic fluctuations in state funding present a tremendous challenge to the well-being of our public institutions of higher education and the Commonwealth's students and families.
- As costs have increased, so has the financial burden placed on our residents, which can lead to reduced access and affordability.
- The Council applauds and supports your efforts as well as the work of the Governor's Commission on Higher Education. We are hopeful that you will be in a position next year to further increase your support for our higher education system – adding to the investment made this year.