



State Council of  
Higher Education for Virginia

**House Appropriations Committee**

**2009-10 Tuition And Fees  
At Virginia Public Institutions**

**Daniel J. LaVista  
SCHEV Executive Director**

**June 16, 2009**



# The American Recovery and Reinvestment Act of 2009

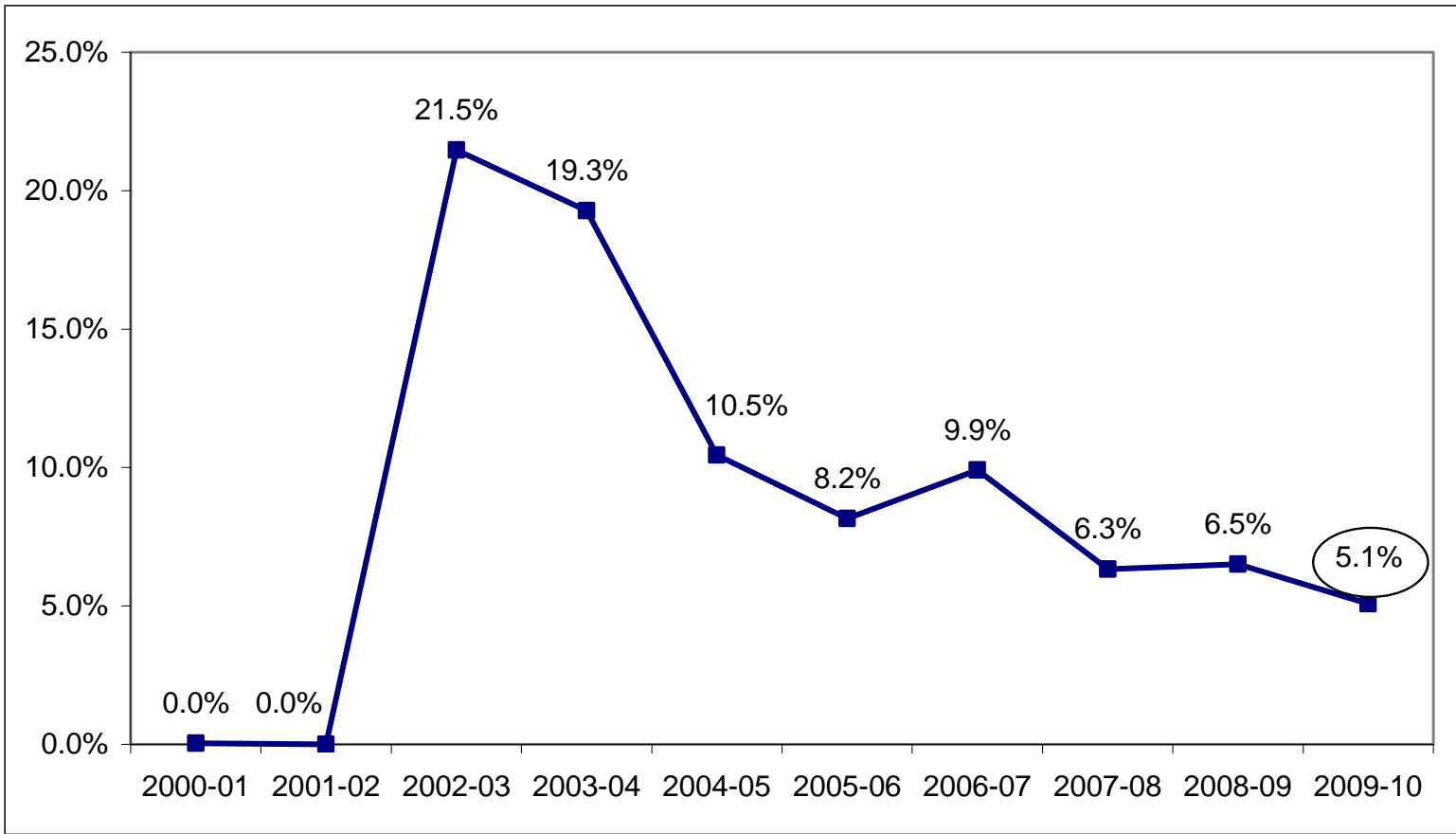
Item 475.50.B.4.c.1 Consistent with the provisions of the Section 14004 (a), Title XIV of the American Recovery and Reinvestment Act of 2009, it is the intent of the General Assembly that funding in this item is to mitigate the need to raise tuition on in-state students at public colleges and universities.

## Allocation of the American Recovery and Reinvestment Act of 2009

Institution	2009-10
Christopher Newport University	\$3,492,779
College of William and Mary	\$3,815,722
George Mason University	\$10,912,431
James Madison University	\$7,301,608
Longwood University	\$3,169,668
Norfolk State University	\$4,230,688
Old Dominion University	\$12,787,803
Radford University	\$5,482,461
University of Mary Washington	\$2,387,643
University of Virginia	\$10,722,655
UVA-Wise	\$1,618,522
Virginia Commonwealth University	\$20,541,737
Virginia Military Institute	\$1,242,513
Virginia State University	\$1,305,733
Virginia Tech	\$17,322,599
Richard Bland College	\$343,420
VA Community College System	\$19,406,739
Virginia Institute of Marine Science	\$660,246
<b>Total</b>	<b>\$126,744,967</b>



# Average Annual Increases Tuition and E&G Fees for In-State Undergraduate Students 2000-2010



Preliminary data



# 2009-10 Undergraduate Tuition and Mandatory E&G Fees

(Preliminary Data)

Institutions	In-State Undergraduate			Out-of-State Undergraduate		
	Charge	Change over 2008-09		Charge	Change over 2008-09	
		Percent	Amount		Percent	Amount
Christopher Newport University	\$4,414	4.9%	\$208	\$12,356	6.6%	\$770
College of William and Mary	\$6,483	4.9%	\$300	\$26,647	5.5%	\$1,384
George Mason University	\$5,840	5.7%	\$314	\$20,936	6.5%	\$1,274
James Madison University	\$3,734	5.0%	\$178	\$15,866	5.4%	\$816
Longwood University	\$4,725	4.8%	\$216	\$14,025	6.9%	\$903
Norfolk State University	\$2,952	6.2%	\$171	\$15,011	7.0%	\$983
Old Dominion University	\$4,412	5.0%	\$209	\$16,862	6.2%	\$989
Radford University	\$4,396	5.0%	\$209	\$14,060	6.5%	\$859
University of Mary Washington	\$4,946	5.0%	\$235	\$16,674	5.0%	\$795
University of Virginia	\$7,873	5.0%	\$375	\$29,873	7.5%	\$2,075
UVA-Wise	\$3,696	3.0%	\$107	\$16,224	4.9%	\$761
Virginia Commonwealth University	\$5,253	5.2%	\$261	\$18,885	5.3%	\$948
Virginia Military Institute	\$5,500	4.5%	\$238	\$23,048	4.0%	\$888
Virginia State University	\$3,584	8.2%	\$271	\$11,918	4.3%	\$490
Virginia Tech <sup>1</sup>	\$7,240	5.0%	\$345	\$20,513	5.1%	\$991
Richard Bland College	\$2,666	2.1%	\$54	\$11,394	1.7%	\$192
VA Community College System <sup>2,3</sup>	\$2,767	7.7%	\$197	\$8,230	5.2%	\$405
<b>Average 4-Year Institutions</b>	<b>\$5,003</b>	<b>5.1%</b>	<b>\$242</b>	<b>\$18,193</b>	<b>5.8%</b>	<b>\$995</b>
<b>Average 2-Year (RBC&amp;VCCS)</b>	<b>\$2,716</b>	<b>4.8%</b>	<b>\$125</b>	<b>\$9,812</b>	<b>3.1%</b>	<b>\$298</b>
<b>Average All Institutions</b>	<b>\$4,734</b>	<b>5.1%</b>	<b>\$229</b>	<b>\$17,207</b>	<b>5.6%</b>	<b>\$913</b>

Notes:

(1) The rate is net of \$130 Board-approved "mitigation grant" related to the American Recovery and Reinvestment Act.

(2) Northern Virginia Community College (NVCC) and J. Sargent Reynolds Community College (JSRCC) have tuition differentials in addition to the systemwide tuition. NVCC has extra \$340.50 and JSRCC has extra \$33 per year. Enrollment at these two colleges represent one-third of the total community college system.

(3) Other mandatory fees vary by institution, ranging from \$30.00 to \$625.50 per academic year, and are not included in this summary.



# 2009-10 Undergraduate Mandatory Non-E&G Fees and Room and Board

(Preliminary Data)

Institutions	Mandatory Non-E&G Fees <sup>1</sup>			Average Room and Board <sup>2</sup>		
	Charge	Change over 2008-09		Charge	Change over 2008-09	
		Percent	Amount		Percent	Amount
Christopher Newport University	\$3,636	8.7%	\$292	\$9,040	1.6%	\$140
College of William and Mary	\$4,317	6.3%	\$254	\$8,502	5.9%	\$472
George Mason University	\$2,184	10.0%	\$198	\$7,700	4.6%	\$340
James Madison University	\$3,510	3.0%	\$102	\$7,690	3.1%	\$232
Longwood University	\$4,200	5.3%	\$210	\$7,596	10.8%	\$740
Norfolk State University	\$2,920	5.1%	\$141	\$7,329	3.0%	\$213
Old Dominion University	\$2,906	7.0%	\$191	\$7,526	5.5%	\$392
Radford University	\$2,508	6.8%	\$159	\$6,970	3.8%	\$254
University of Mary Washington	\$2,166	5.0%	\$103	\$7,462	6.0%	\$422
University of Virginia	\$1,799	-0.2%	-\$3	\$8,290	6.0%	\$470
UVA-Wise	\$3,052	7.1%	\$202	\$7,770	8.4%	\$599
Virginia Commonwealth University	\$1,864	4.3%	\$77	\$8,335	5.3%	\$421
Virginia Military Institute	\$5,690	7.5%	\$396	\$6,792	5.4%	\$348
Virginia State University	\$2,590	0.0%	\$0	\$8,050	4.4%	\$340
Virginia Tech	\$1,365	4.8%	\$62	\$5,824	6.4%	\$348
Richard Bland College <sup>3</sup>	\$1,010	0.0%	\$0	\$8,240	3.0%	\$240
VA Community College System	\$14	0.0%	\$0	N/A	N/A	\$0
<b>Average 4-Year Institutions</b>	<b>\$2,980</b>	<b>5.6%</b>	<b>\$159</b>	<b>\$7,658</b>	<b>5.3%</b>	<b>\$382</b>
<b>Average 2-Year (RBC&amp;VCCS)</b>	<b>\$225</b>	<b>0.0%</b>	<b>\$0</b>	<b>N/A</b>	<b>N/A</b>	<b>\$0</b>
<b>Average All Institutions</b>	<b>\$2,690</b>	<b>5.5%</b>	<b>\$140</b>	<b>\$7,695</b>	<b>5.0%</b>	<b>\$369</b>

Notes:

(1) There is no difference in mandatory non-E&G fee charges by residency.

(2) Charges listed here represent the weighted average double occupancy room charge and the maximum weekly meal plan offered, not necessarily the plan used by most students.

(3) \$8,240 is for room only. The college does not offer a board plan.



# 2009-10 Undergraduate Total Cost

(Preliminary Data)

Institutions	In-State Undergraduate			Out-of-State Undergraduate		
	Charge	Change over 2008-09		Charge	Change over 2008-09	
		Percent	Amount		Percent	Amount
Christopher Newport University	\$17,090	3.9%	\$640	\$25,032	5.0%	\$1,202
College of William and Mary	\$19,302	5.6%	\$1,026	\$39,466	5.6%	\$2,110
George Mason University	\$15,724	5.7%	\$852	\$30,820	6.2%	\$1,812
James Madison University	\$14,934	3.6%	\$512	\$27,066	4.4%	\$1,150
Longwood University	\$16,521	7.6%	\$1,166	\$25,821	7.7%	\$1,853
Norfolk State University	\$13,201	4.1%	\$525	\$25,260	5.6%	\$1,337
Old Dominion University	\$14,844	5.6%	\$792	\$27,294	6.1%	\$1,572
Radford University	\$13,874	4.7%	\$622	\$23,538	5.7%	\$1,272
University of Mary Washington	\$14,574	5.5%	\$760	\$26,302	5.3%	\$1,320
University of Virginia	\$17,962	4.6%	\$782	\$39,962	6.8%	\$2,542
UVA-Wise	\$14,518	6.7%	\$908	\$27,046	6.1%	\$1,562
Virginia Commonwealth University	\$15,452	5.2%	\$759	\$29,084	5.2%	\$1,446
Virginia Military Institute	\$17,982	5.8%	\$982	\$35,530	4.8%	\$1,632
Virginia State University	\$14,224	4.5%	\$611	\$22,558	3.8%	\$830
Virginia Tech	\$14,429	5.5%	\$755	\$27,702	5.3%	\$1,401
Richard Bland College	\$11,916	2.5%	\$54	\$20,644	2.1%	\$192
VA Community College System	\$2,781	7.6%	\$197	\$8,244	5.2%	\$405
Average 4-Year Institutions	\$15,642	5.2%	\$779	\$28,832	5.6%	\$1,536
Average 2-Year (RBC&VCCS)	\$2,942	4.5%	\$125	\$10,037	3.1%	\$298
Average All Institutions	\$14,182	5.2%	\$703	\$27,139	5.4%	\$1,401



# 2009-10 In-State Undergraduate Tuition and Total Mandatory Fees<sup>1</sup>

(Preliminary Data)

Institutions	Tuition and Total Mandatory Fees	% Increase Over 2008-09	\$ Increase Over 2008-09
George Mason University	\$8,024	6.8%	\$512
Old Dominion University	\$7,318	5.8%	\$400
University of Virginia	\$9,672	4.0%	\$372
Virginia Commonwealth University	\$7,117	5.0%	\$338
Virginia Tech	\$8,605	5.0%	\$407
College of William and Mary	\$10,800	5.4%	\$554
Christopher Newport University	\$8,050	6.6%	\$500
UVA-Wise	\$6,748	4.8%	\$309
James Madison University	\$7,244	4.0%	\$280
Longwood University	\$8,925	5.0%	\$426
University of Mary Washington	\$7,112	5.0%	\$338
Norfolk State University	\$5,872	5.6%	\$312
Radford University	\$6,904	5.6%	\$368
Virginia Military Institute	\$11,190	6.0%	\$634
Virginia State University	\$6,174	4.6%	\$271
Richard Bland College	\$3,676	1.5%	\$54
VA Community College System	\$2,781	7.6%	\$197
<hr/>			
Average 4-Year Institutions	\$7,984	5.3%	\$401
Average 2-Year (RBC and VCCS)	\$3,229	4.0%	\$125
<b>Average All Institutions</b>	<b>\$7,424</b>	<b>5.2%</b>	<b>\$369</b>

<sup>(1)</sup> Includes mandatory E&G fees, and mandatory non-E&G fees which are charges assessed against students primarily for Auxiliary Enterprise activities such as athletics, student health services, student unions, recreational facilities and programs, campus transportation, and capital debt service.



# Tuition and All Fees Rank Among All States<sup>1</sup>

	1989-90	1993-94	2000-01	2007-08	2008-09
<b>Major Public Universities</b>	8th	5th	18th	11th	10th
University of Virginia					
<b>Public Colleges and State Universities</b>	2nd	2nd	11th	10th	10th
George Mason University Old Dominion University James Madison University Longwood University Radford University					
<b>Public Community Colleges</b>	28th	19th	41st	30th	29th

(1) Based on a survey conducted by the Washington State Higher Education Coordinating Board. Although not all public institutions are included in this survey, the averages and changes over time at the same set of institutions offer consistency, and the large number of institutions included provides a close approximation to state averages.