

Aligning Virginia's Research Investments with Commonwealth Priorities

Presented to the
State Council of Higher Education for Virginia

January 9, 2012

§ 2.2-2221.2. Commonwealth Research and Technology Strategic Roadmap

Develop the Roadmap...to use to identify research areas worthy of institutional focus and Commonwealth investment in order to promote commercialization and economic development efforts in the Commonwealth

§ 2.2-2233.1. Commonwealth Research Commercialization Fund

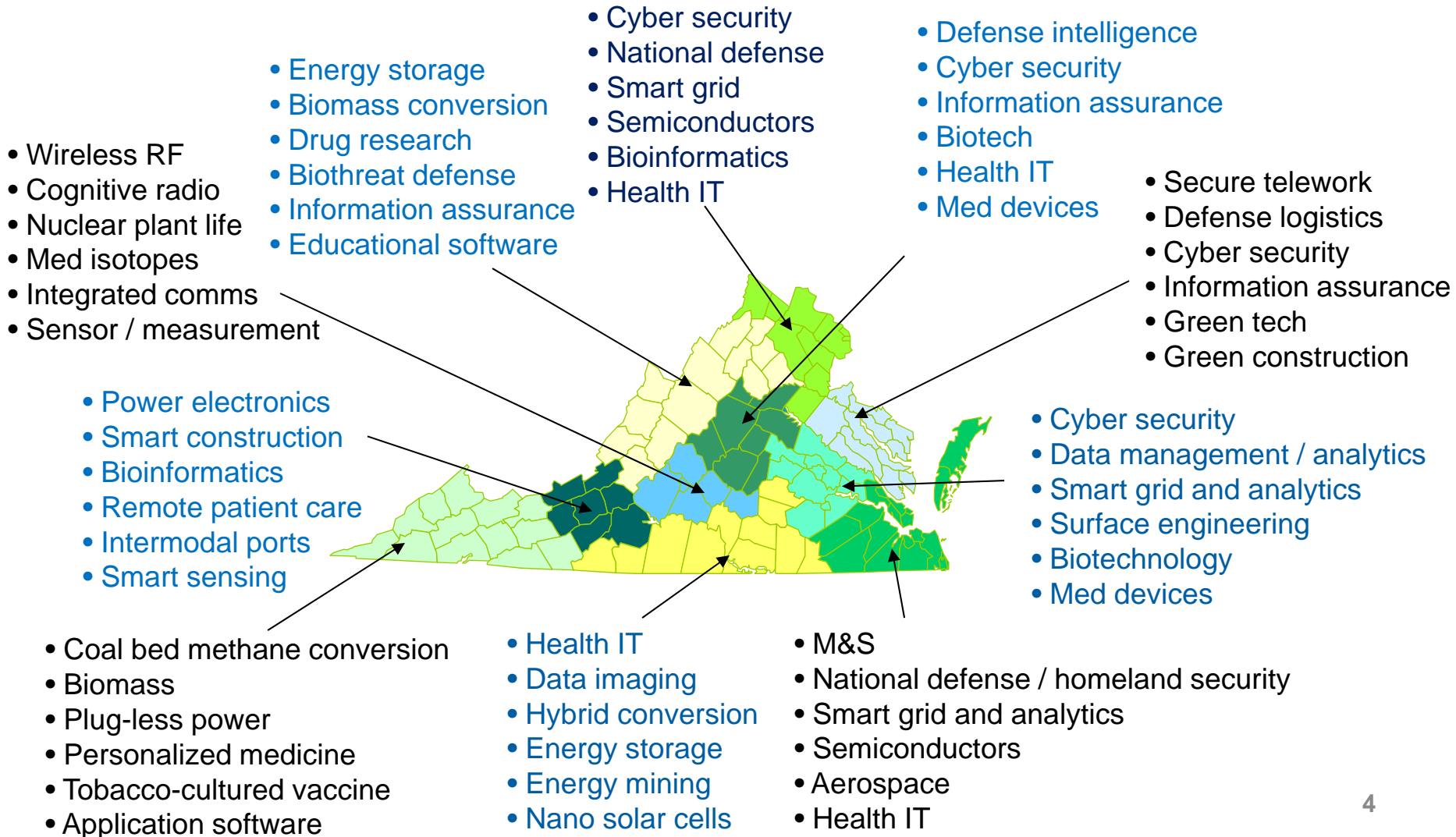
Awards from the Fund shall only be made to applications that further the goals set forth in the Commonwealth Research and Technology Strategic Roadmap

R&T Roadmap



- Identify key industry sectors for potential investment
- Identify basic and applied research opportunities with commercial promise in these sectors
- Encourage commercialization and economic development in these sectors
- Help ensure that investments in research are made prudently in focused areas with significant potential for commercialization and economic growth

Initial Industry Findings



Roadmap / CRCF Intersection



- Industry Opportunities / Eligible Sectors
 - Advanced Manufacturing
 - Aerospace
 - Communications
 - Cyber Security
 - Energy
 - Environment
 - Information Technology
 - Life Sciences
 - Modeling and Simulation
 - Nuclear Physics
 - Transportation
- www.cit.org/programs/cit-rd/roadmap

Roadmap Application



	CRCF	VEDP	Tobacco Comm.	Universities	Industry	Localities	CIT
Value Add							
Strategic planning	●	●	●	●	●	●	●
Investment vetting	●	●	●	●		●	●
Company recruiting		●	●			●	●
Research recruiting	●	●	●	●	●	●	●
Scholar recruiting	●		●	●			●
Investor recruiting		●	●	●		●	●
NewCo formation	●		●	●	●	●	●
Fed program dev	●	●	●	●	●		●

CRCF - Past and Present



- Established in 2001 as CTRF
- ~\$25M in initial funding
- Collaborative research
- Public colleges and universities eligible
- Target sectors named in legislation
- 2009 / 2011
 - Renamed CRCF
 - Commercialization emphasized
 - Target sectors mirror Roadmap
 - Eligibility broadened, including private colleges and universities

CRCF Acceleration



Research & Technology Strategic Roadmap

Eminent Researcher Fund

Research Match

SBIR Match

RESEARCH

PROOF OF
CONCEPT
OR
INVENTION

EARLY
STAGE
DEVELOPMENT

PRODUCT
DEVELOPMENT

PRODUCTION

GAP Fund

Commercialization Fund

Facility Enhancement Fund

CRCF - FY2012



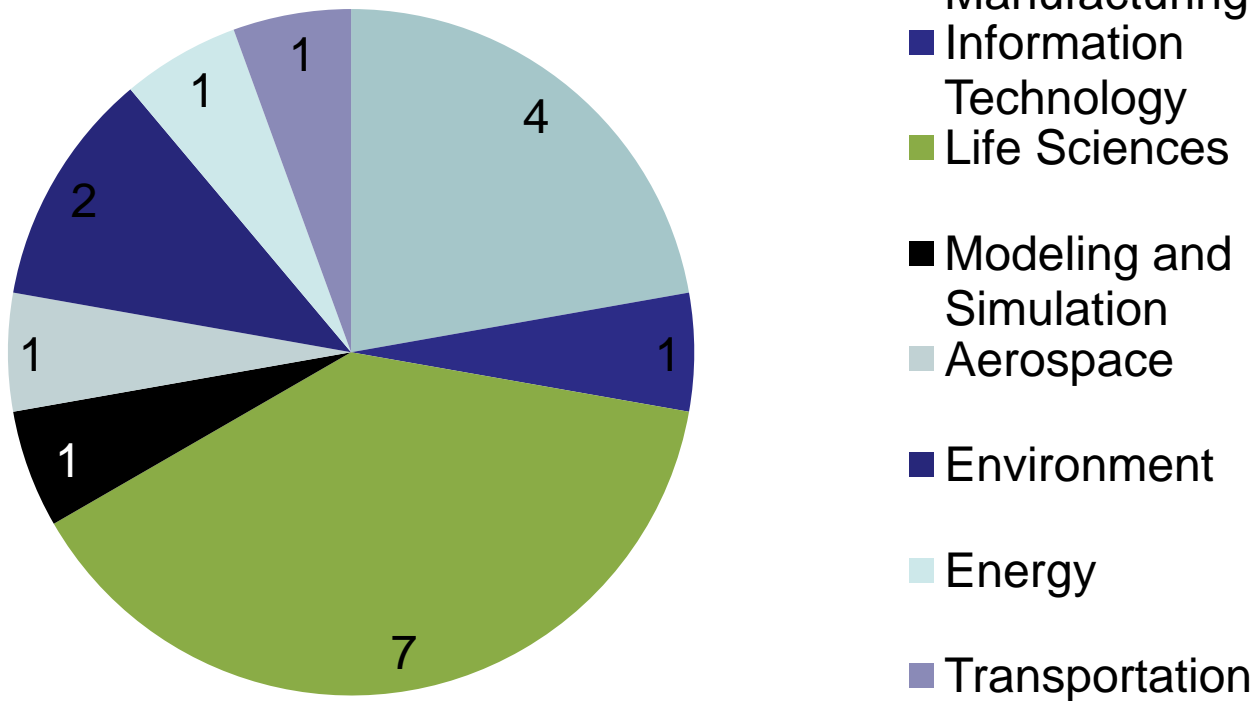
- CRCF
 - \$6M appropriated for FY2012
 - \$2M for SBIR Phase I NIH matching program
 - \$4M for other programs
 - Matching Funds
 - Facilities Enhancement Loan
 - Commercialization
 - Eminent Researcher Recruitment
- Fall 2011 solicitation and awards
 - \$3.9M awarded
 - 8 awards to IHE's, totaling ~\$2M
 - IHE partnerships / associations
 - Life sciences, nanotechnology, advanced manufacturing, marine sciences

-

CRCF Fall 2011 Solicitation



Technology Sectors Represented in University Submissions



CRCF – Next Steps



- Upcoming solicitation – Jan / Feb release
- June 2012 award announcements

- \$6 million / year in Gov. McDonnell's introduced FY13-14 budget